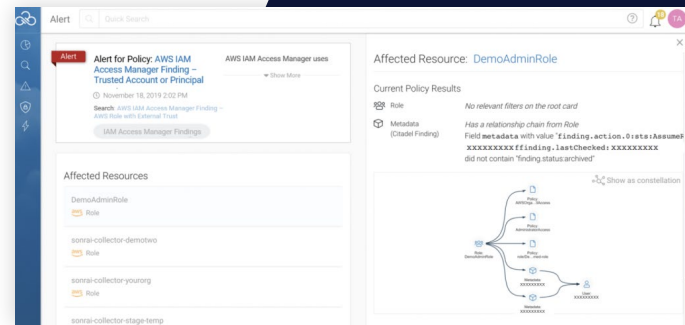


Integration With AWS Identity and Access Management (IAM) Access Analyzer

Sonrai Dig's API level integration with AWS Identity and Access Management (IAM) Access Analyzer collects and analyzes key security findings reported by AWS. These findings automate the reporting of resources that are accessible from outside an enterprise's AWS accounts.

This allows Sonrai Dig, our identity and data governance platform, to enrich discovered AWS trust relationships where an AWS identity can access the roles, keys, or other resources identified by IAM Access Analyzer across 100s of accounts. Sonrai Dig then compares audit data to the permissions enabled on the resource (role, key, etc.) to determine if there is over-privilege in a specific trust relationship and the permissions that have been granted. Additionally, Dig allows you to centralize workflow across your entire organization and prioritize high-risk relationships based on critical resources in a single workload or swimlane.



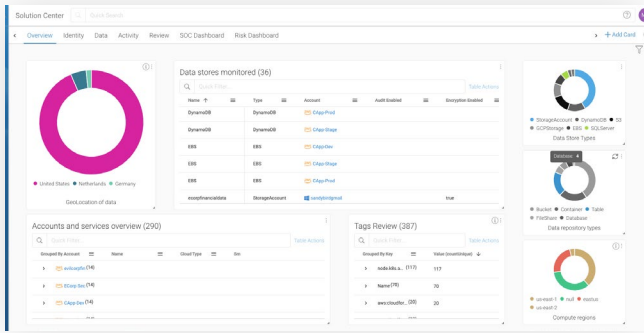
Integration Features & Benefits

Sonrai Dig Collects & Analyzes AWS Findings

- Dig enables comprehensive search and policy assessment across 100s of accounts.
- Dig leverages AWS findings in its IAM protection solution.

AWS Provides Rich Context to Sonrai Dig

- Who has accessed AWS resources and data?
- Who can access AWS workload data and their components?
- Does the AWS IAM configuration properly protect data if a credential is stolen or misused?



Prevention and Remediate Policy Violations Across AWS

- Detect out of policy AWS identity activity and get instant alerts.
- Put prevention rules in place across your cloud to ensure that mistakes are caught, and rejected, before they become a problem.
- Simplify management and immediately remediate events to protect your critical AWS resources.
- Comply with recognized industry frameworks, AWS Well-Architected framework and CIS benchmarks, etc., as well as internal ones.
- Implement regulatory controls across all areas of your cloud including networking, data protection, elevated access, periodic access, and reporting and audit requirements.

Discover, Govern and Monitor All AWS Identity Activity

- Gain end-to-end visibility to understand your Identity's Effective Permissions enabling you to truly get to Least Privilege.
- Continuous monitoring enables you to maintain Least Privilege across your AWS environment.
- Ongoing configuration protection due to possible misconfiguration or mismanagement.

Learn More

Sonrai Dig is built on a sophisticated graph that continuously identifies and monitors every possible relationship between identities and data that exists inside your public cloud. Our solution delivers complete identity and data governance across the public cloud enabling your organization to eliminate risk.

Want to get started with Sonrai Dig and AWS IAM Access Analyzer? [Contact us to Learn More.](#)